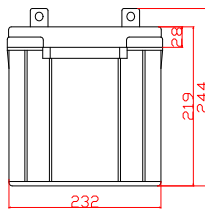
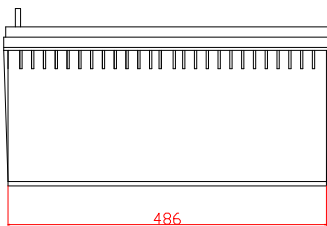
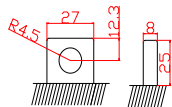
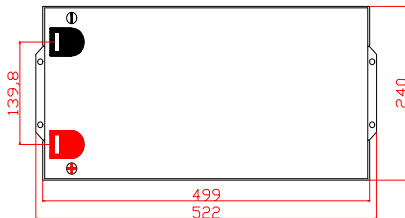


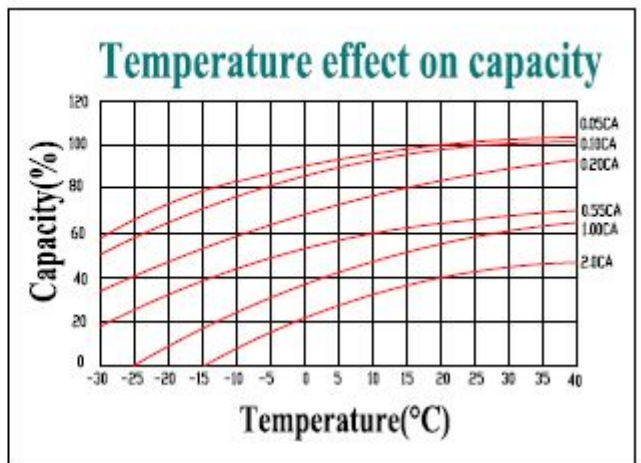
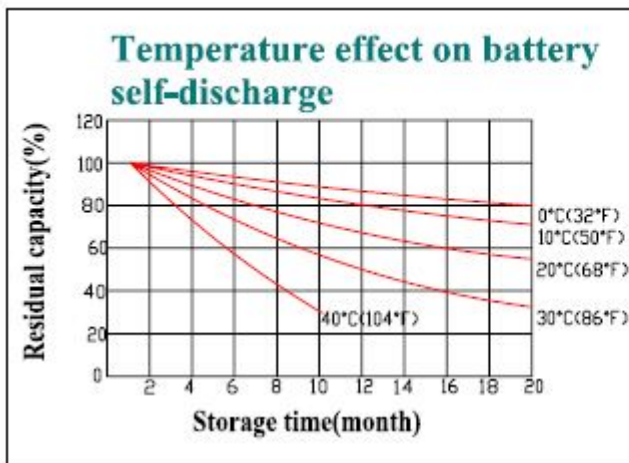
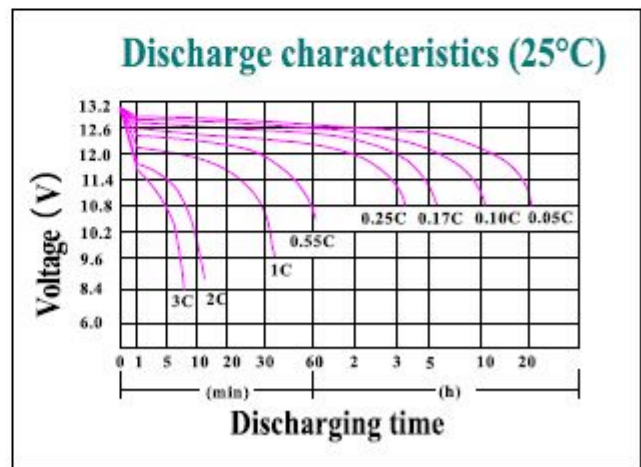
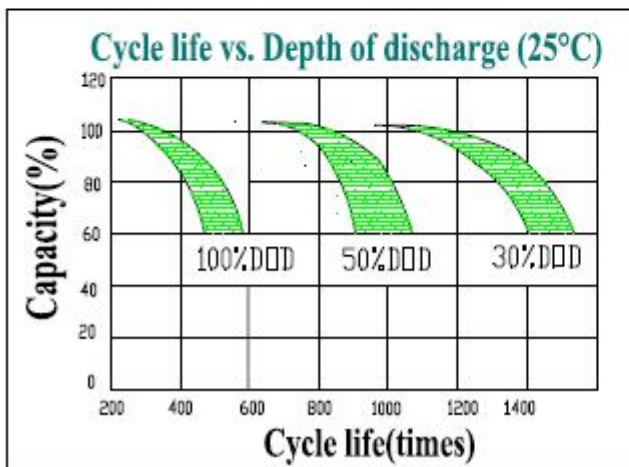
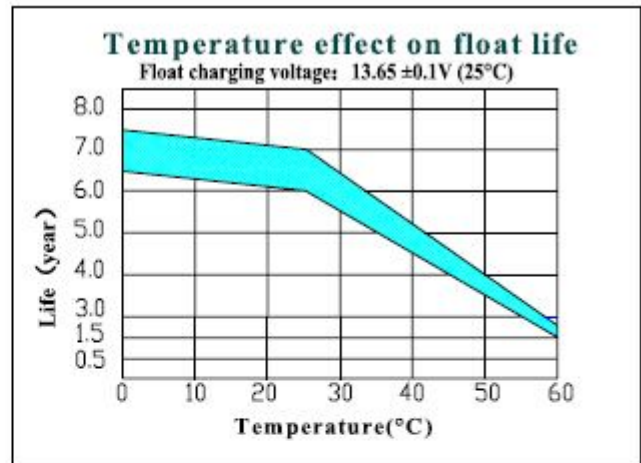
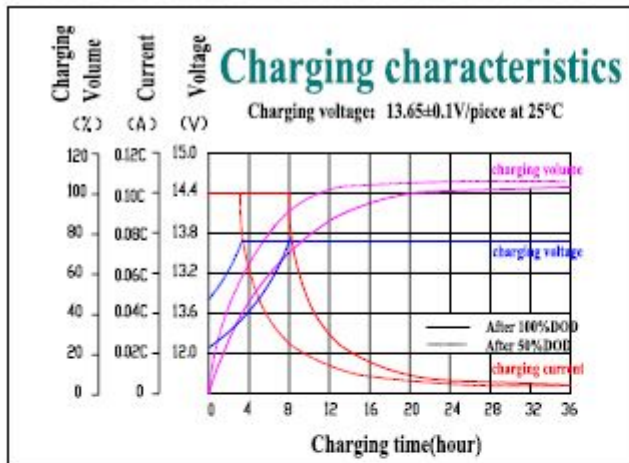
12V200Ah GEL

Battery Type	PW200-12			
(25 °C) Design Life	8 Years			
(25 °C) Capacity	10HR(20.0A,1.8V)	5HR(34.0 A,1.75V)	3HR(50.0 A,1.75V)	2HR(70.0 A,1.75V)
	200.0AH	170.0 AH	150.0 AH	140.0 AH
Dimension	Lenght	Width	Height	Total Height
	522±1.5mm(20.55inch)	240±1.5mm(9.45inch)	219±1.5mm(8.62inch)	244±1.5mm(9.61inch)
Weight	59.6Kg (131.40lbs)			
(25 °C) Internal Resistance	≤4.0 mΩ Charging Saturation Status			
(25 °C)Self-discharge	About 3% / Month			
(10HR) Capacity While Various Temperature	40 °C	25 °C	0 °C	-15 °C
	102%	100%	85%	65%
Complementary Charging System	Cycling Use		Standby Use	
	14.4~15.0V(-30mv/°C),37.0A Max initial current		13.6~13.8V(-20mv/°C)	

Product diemensions:



Performance Characteristics



Battery Construction

Component	Positive plate	Negative plate	Container	Cover	Safety valve	Terminal	Separator	Electrolyte
Raw material	Lead dioxide	Lead	ABS	ABS	Si-Rubber	Copper	Fiberglass	GEL